

Become part
of the journey

THE OCEANNA



Contents

A WORD FROM THE GMD	08
NIGERIA	10
LAGOS	12
ABOUT GRENADINE HOMES	14
THE OCEANNA	17
THE RESIDENCE	18
THE OCEANNA HOTEL	25
THE OFFICE	28
RECREATION	35
LUXURY RETAIL	40
OUR PARTNERS	44
CORPORATE GOVERNANCE	46

Your place
in history



From The Group Managing Director

As we power through an era when global investors and business leaders look to Africa as the next region of transformative economic growth with an increasing attention to our great nation; hope and aspiration are ever more on the rise. A future where Nigeria is a leading nation in the global arena is quickly becoming a reality –and The OCEANNA is set to be one of the main characters in this new era of optimism.

Although there are many impressive freestanding developments in the world, The OCEANNA's story in revolutionising design and engineering in Africa will act as symbol of expertise and human ingenuity pioneered by Nigerians. An unrivalled 360° offering, yet to be seen in the region, The OCEANA is pioneering new ways to live, work and play, truly a platform for endless possibilities.

Dazzling the Nigerian skyline, The OCEANNA will inspire a sense of hope, pride and awe for Nigerians, expats and the world. Reflecting an inspiring story about a magnificent nation claiming its place in history, residents and visitors will be compelled to become a part of this story by making The OCEANNA their home, their place of business, their must go destination. It will without a doubt be an iconic place for iconic people.

History rewritten.
Geography reshaped.
Economic potential unleashed.

Adeyinka Adesope
Group Managing Director



About Nigeria

Consistently progressing evermore through a dynamic social, political and economical transformation - Nigeria is evolving; hope and aspiration driving it onto the world stage.

A new reality is dawning. Nigeria is no longer simply a regional power. Her status as the 'Giant of Africa' is contingent on her growing economy and diverse population.

And, with a growing fiscal gravitas that is recognised by the World Bank, Nigeria's influence in Africa is set to extend the world.

Home to one of the largest youth populations on earth, Nigeria heralds a new era of optimism – encouraged by a millennial generation that looks to revolutionise the country with their uniqueness and vision.

Contemporary Nigeria is a fertile ground for innovation, for bravery – a place where iconic people flock to shape the future.

About Lagos

Lagos, 'the center of excellence' encapsulates Nigeria's evolution – it is the engine room behind the country's drive towards the future.

Existing as the largest city on the African continent, with about 21 million people – Lagos is a diverse and electric city that acts as a powerful business hub in the region, and is one of the fastest growing cities in the world.

With a burgeoning central business district that is home to the country's banking, finance and corporation headquarters – Lagos is clamouring for modern developments that accurately reflect its professional populace.

But residents want more. They want to reshape the geography of the city – they want to showcase Nigeria's economic potential. They want a revolution in lifestyle design.



About Grenadines Homes

Grenadines Homes, a member of the Palton Morgan Group, is run by a team of passionate individuals, committed to changing the perception of Nigeria's building industry. Our philosophy is that every home should fascinate the imagination and celebrate creativity, whilst remaining an oasis that you're glad to return to at the end of each day.

Convenient luxury is the guiding principle for every Grenadines Homes development – as projects are built in estates that provide best-in-class service delivery, infrastructure, environment, security and style. We build more than just residences.

Grenadines Homes represent a luxury approach that suits varying tastes and preferences. With projects in various locations in Lagos and Abuja, we are masters in exploring new areas and delivering high-class residences.

*fascinate the
imagination*





The Oceanna

The Oceanna is the revolution that Nigeria wants – a modern mixed-use development that befits the country's ambitious vision. It is an icon of the future.

Architecturally inspired by the sculpted beauty of the seashells that punctuate the shores of Victoria Island, as well as the artful personality of the colonial houses of Ikoyi – The Oceanna is a conglomeration of man-made innovation and organic, natural beauty.

Consisting of three premium and one multi-use tower as well as an oasis of parkland – The Oceanna delivers to Lagos an aesthetic construction that is boldly committed to transformation.

With specially designed residences, unique offices, luxury retail and boundless recreation opportunities – The Oceanna is designed with impeccable function; inspiring through innovation.

Residents, workers and visitors alike are invited to enjoy an unrivalled 360-degree experience – one that is yet to be seen in the region, and a match for its global mixed-use counterparts.

Whether overlooking the blue expanse of the Atlantic Ocean or the extensive greenery of Victoria Island – this is a community with an innate connection to Lagos, encouraging business synergy and convivial community.

The Residences



Luxurious in design, The Oceanna Residences are curated to be modern and iconic – dream homes, made a reality.

With an architectural focus around openness, each apartment encompasses a centralised focus on light, with a distinct, open-air aesthetic – a fresh perspective on living that is both adaptable and easily personalised.

With two, three, four and five bedroom maisonettes and duplex penthouses on offer, The Oceanna Residences cater to an eclectic range of residents – encouraging lifestyle elevation for everyone, from young professionals to successful families.

And with most apartments framed by double-aspect views of both the Atlantic Ocean and The Oceanna's green recreational space – residents are invited to enjoy unrivalled panoramic views of nature.

Living becomes seamless – with fully-equipped, modern kitchens and uniquely-designed, spacious living areas, as well as a communal spa, pool and gym facilities.









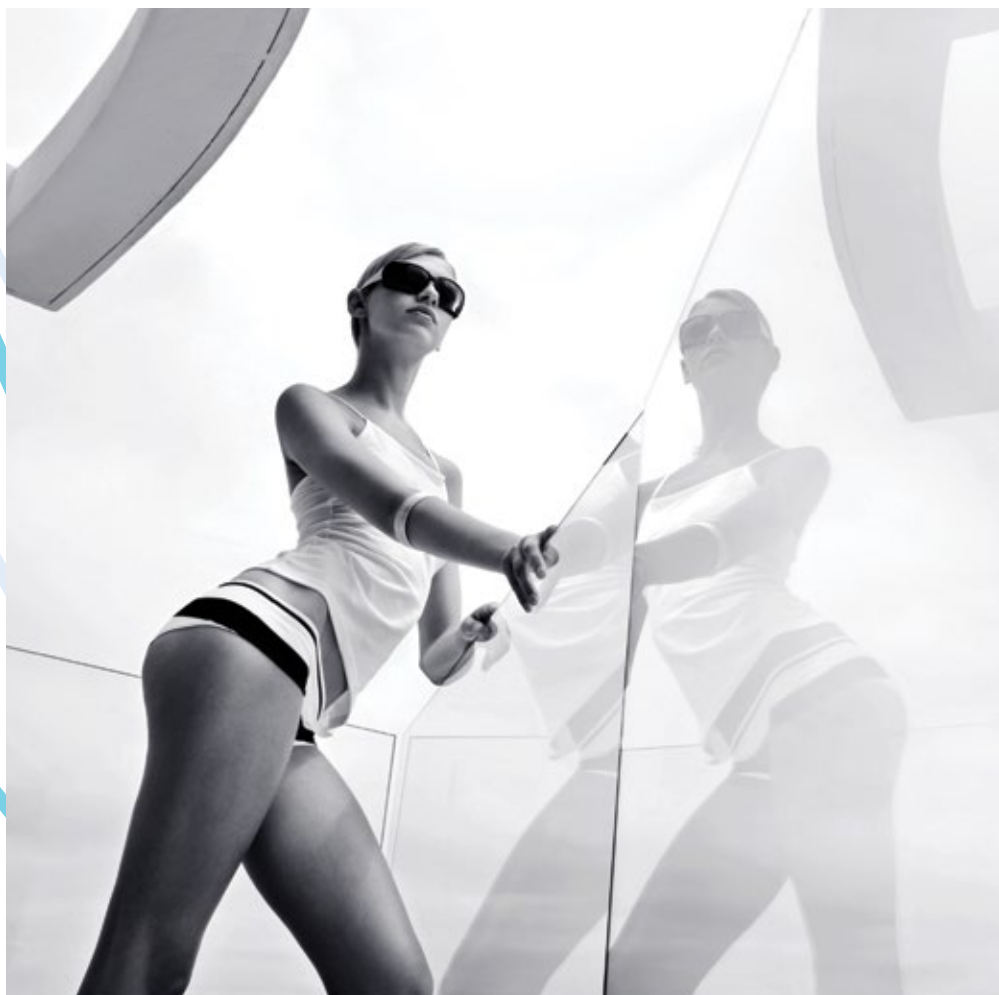
The Oceanna *Hotel*

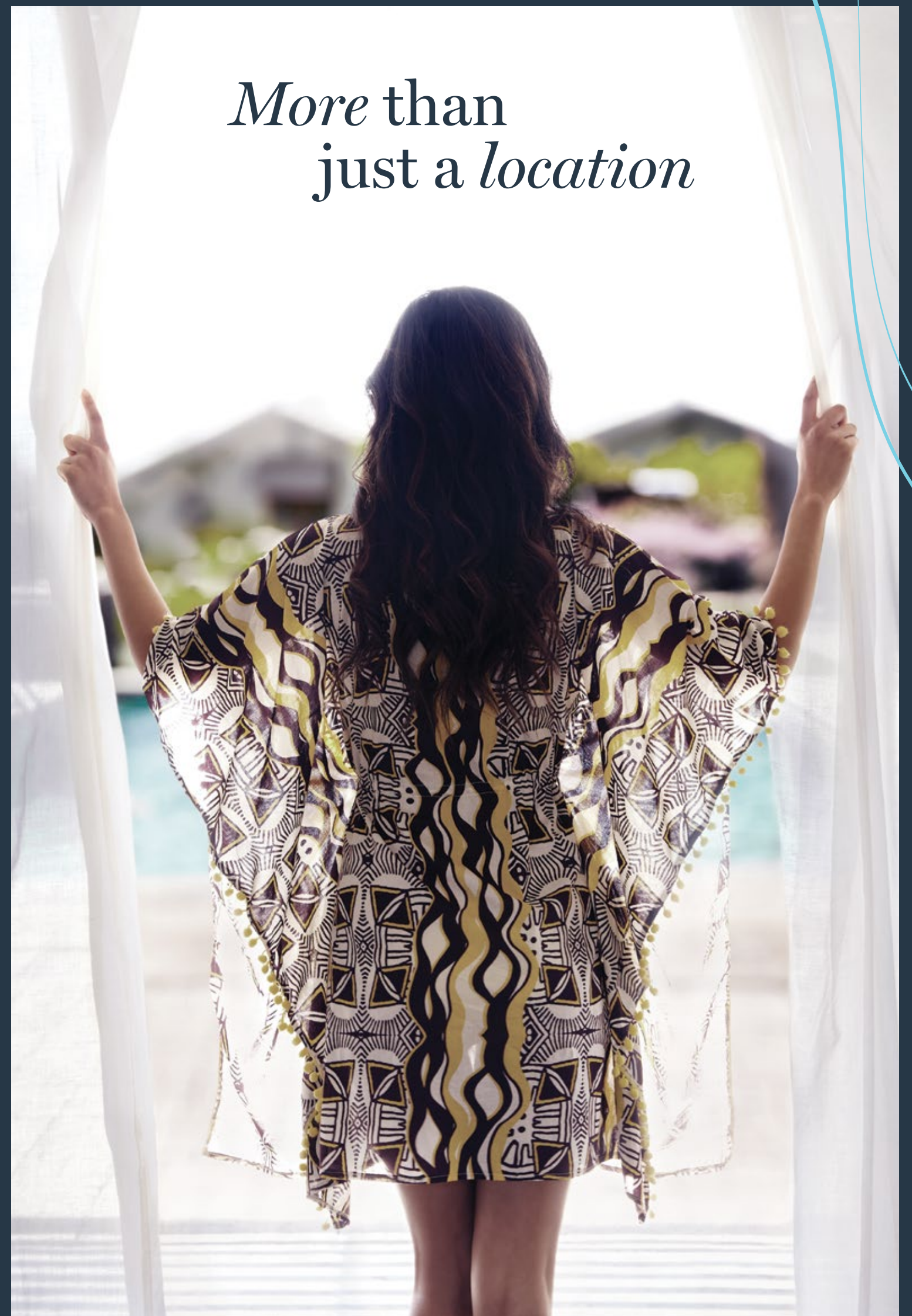
Existing as an iconic place for iconic people, this elevated community also includes The Oceanna Hotel apartments – a luxury destination that reshapes the hospitality landscape in Nigeria.

The Oceanna Hotel apartments includes 1 bedroom, 2 bedroom and studio apartments, outfitted with opulent ensuites and fully equipped kitchen spaces. Furthermore, the hotel provides unique business and leisure facilities that cater to the expectations of its discerning clientele.

Complimented by magnificent views of the city – The Oceanna Hotel apartments offers an elevated panorama of the community below, whilst remaining intrinsically part of its wider experience.

Curated with an attention to detail that defines the entire community – The Oceanna Hotel apartments is more than just a location; it is the portal to a plethora of opportunities and experiences.





The Office

Innovation inspires business elevation. That's why The Oceanna Offices are crafted with a unique vision in mind. A motivated, connected and synergic business space.

Fostering collaboration between individuals and companies, The Oceanna Offices are outfitted with state-of-the-art fixtures, amenities and systems – befitting their Grade A status.

Connection is simple and seamless, with an ICT infrastructure that allows businesses to conduct work regionally and internationally – at the best internet speeds.

And with a location that puts companies at the heart of Victoria Island; moving between The Oceanna Offices and arguably the most diverse business city in Africa could not be easier. Similarly, both office towers are serviced by a high-speed elevator system.

With 54 flexibly designed units built over 15,588 sqm, The Oceanna Offices are a definitive destination, and with onsite restaurants and cafes – this is more than office space, it is part of The Oceanna community.





*A motivated,
connected
and synergic
business space.*



Part of
The Oceanna
Community



Recreation

Embodying the very nature of a 360-degree lifestyle experience – The Oceanna delivers a recreational environment that showcases its trailblazing personality. A true 24 hour live, work and play community.

By ensuring that The Oceanna is a recreational destination to rival any in Africa, the environment is designed to foster a healthy social atmosphere.

Through the evocative use of a natural, organic aesthetic, the incredible location of The Oceanna is realised – bordered by the blue expanse of the Atlantic.

Residents, guests and workers will have the opportunity to enjoy an encompassing health club floor, which includes a fully equipped gym, a swimming pool for adults and children, as well as a beautifully landscaped terrace.

A specially designed community floor exists to encourage a convivial, connected environment – including a cinematic TV Room, an opulent banquet hall, a sumptuous dining room and a state-of-the-art gym and pool.

The Oceanna's walkable nature further accentuates its communal personality – with accessibility and connection at the forefront of its benefits.



A true 24 hour
*live, work and
play* community





Luxury Retail



Not satisfied with the norm, The Oceanna's retail offering is reflective of the changes happening in the market – introducing a mix of luxury consumer options that reflect a diversified population with an increased disposable income.

Shifting away from the siloed spaces of vacuous mega malls, The Oceanna delivers a considered range of shops and F&B that transforms Victoria Island's retail environment – reinventing Nigeria's shopping experience.

From amenity-based options designed to create seamless living, to the high-end boutiques that compliment the discerning tastes of The Oceanna's inhabitants – the available retail evokes happiness, joy and success.

Thoroughly connected, the 1,037 sqm rental outlets are punctuated by man-made lakes – equipping consumers with a connection to nature, wherever they are.





Reinventing Nigeria's Shopping Experience



Our Partners

Wherever our clients choose to do business, we look for untapped potential. We challenge ourselves to see things differently – achieving outcomes that exceed our clients' expectations, with an unparalleled zeal for results.

For almost a decade, the Group has developed a proven track record; consistent creation of value for shareholders has resulted in superior returns and industry growth.

We are relentless in seeking out partners who mirror our values, passionate and committed leaders who share a common goal: to accelerate success for everyone associated with our companies – including our clients, sales professionals, support staff, communities and business partners.



CAPPA & D'ALBERTO PLC | Main Contractor

Cappa is one of the foremost construction companies in the country with over 83 years' experience in building construction they have contributed immensely in changing the Nigeria skyline.



BRASH

Brash Brands create game-changing brands for ambitious businesses. They originate great ideas and transform them into vivid, touchable experiences. Truly global, they bring together the best people for the job, anywhere in the world. Their creativity energises clients businesses, boosting productivity, retention and adds tangible commercial value. Some of Brash's clients include Burj Khalifa in Dubai, Chelsea Barracks in London and Piramal Group in India.



ECAD ARCHITECTS

The company has 20 year experience in architectural design in the country, they work alongside HOK to design an iconic project to meet the needs of our savvy clientele. The many admirable projects in the country recently being constructed are the BAT corporate HQ Kingsway Tower, Seattle Tower Walter Carington Crescent, Heritage Place.



HOK ARCHITECTS

The concept architects for the project, HOK is the largest architectural & engineering firm in America and UK. The firm has 60 years' experience in architectural design with 25 offices spread across 2 continents. They have been given numerous awards for their work on different continents. Some of HOK's clients include Barclay World Headquarters and Baku Flame.



MORGAN OMONITAN & ABE LTD.

Structural Engineering Consultants

Morgan Omonitan & Abe Ltd – MO&A, is an engineering & development consulting firm in Nigeria, with recent expansion to Ghana in West Africa. Founded in 1972, MO&A has over 40 years of experience and expertise in providing integrated engineering & development consulting services such as civil & structural engineering, project management and independent expert services to the private & public sectors. MO&A has built a legacy of several successfully executed projects and partnerships with clients and stakeholders.



CA Consultants Limited

CA Consultants Limited (founded in Nigeria; 1987) covers the full spectrum of consulting Mechanical, Electrical, and Piping engineering projects. CA consultants handle all aspects of Mechanical, Electrical and Piping (Plumbing) engineering planning, design and supervisory services for residential, commercial and industrial buildings on major construction projects. Specializing in complete project management, planning, design, and supervisory services and focuses on a project from the feasibility analysis/studies through to completion.

Corporate Governance
at the Grenadines Homes

Board of Directors

Femi Olubanwo Chairman	<p>Grenadines Homes is being governed by the Palton Morgan Holdings board of directors, a holding company made up of five subsidiaries. On the board are seasoned professional who make decisions on important corporate matters and supervise execution of key initiatives amongst all member companies.</p> <p>The group has been able to take advantage of emerging opportunities and attain a clear and distinct market leadership position in the real estate sector through its various subsidiaries.</p> <p>The goal of our board is to deliver a strong and consistent investment performance that exceeds the expectation of stakeholders, through a team of passionate and committed management with a tapestry of diverse professional backgrounds.</p>
	<p>Femi Olubanwo joined Palton Morgan Holdings in 2015 as a non-executive director and was appointed as the Chairman in the same year. He currently serves as a partner at Banwo & Ighodalo, a firm he co-established after a short stint with the Lagos State Ministry of Justice.</p> <p>He is often cited as one of the Leading Lawyers in the world, particularly in the areas of Banking, Finance and Mining by many international legal publications such as Chambers Global, Who's Who Legal and the IFLR 1000.</p> <p>In February 1991, he co-established the law firm, Banwo & Ighodalo, as a Partnership. The firm has since grown from two Partners and one Associate to today's nearly 60 lawyers including 7 Partners. A full service firm, Banwo & Ighodalo is well known for its many high profile transactions in its specialized areas of Capital Markets, Financing, Project Finance, Mergers & Acquisitions and Energy.</p> <p>Femi served the Government of Nigeria in several economic sector reform committees. He was appointed a member of the Bureau of Public Enterprises' Solid Minerals Sector Steering Committee (2000) by the National Council on Privatisation, the apex body charged with responsibility for the implementation of the Nigerian government's privatisation and commercialisation programme.</p> <p>He also served as Chairman of a Committee established by the Ministry of Finance to formulate and draft a Code of Governance/Ethics for Capital Market Regulators.</p> <p>Femi has published and presented papers on different topics in his areas of practice and he is a director of many companies operating in diverse sectors of the Nigerian economy.</p> <p>He graduated with a Bachelor of Laws (LL.B) honours degree from the University of Lagos in 1981 and was admitted to the Nigerian Bar in 1982.</p>

Mr Adeyinka Adesope Director	<p>Adeyinka Adesope is the Director of Grenadines Homes Limited and was appointed as the Group Managing Director of Palton Morgan Holdings in 2012. Prior to the above Adeyinka was the Managing Director/ CEO of Propertymart limited, a fast growing Real Estate Investment firm. Under his tenure, the business witnessed significant success.</p> <p>Adeyinka's stint with local and multinational companies and valuable experience in setting up a number of companies prior to being appointed MD/CEO of Propertymart in 2008, helped in transforming the company into a strategy think-tank. A known promoter of innovation and creativity, Adesope does not believe in limitations. He is a young, unassuming entrepreneur with over a decade of experience in the business world.</p> <p>Adeyinka is an alumni of University of Cambridge, UK. He has degrees and professional certifications in Business management, Building & Construction Management, Estate Development, Sales & Marketing and Leadership and Politics.</p> <p>He is an international member of National Association of Home Builders, Washington D.C, United State of America; an associate member of Nigeria Institute of Directors; a Fellow of the Institute for Government Research & Leadership Technology; a fellow of Nigeria Institute of Marketing and an alumnus of both Lagos Business School and Ogun State University.</p> <p>Adeyinka is a recipient of numerous prestigious awards, a Peace Ambassador of United Nation Universal Peace Federation and above all, a child of the Most High GOD.</p>
--	--

Chris Ogbechie BEng, MBA, PhD. Director	<p>Chris Ogbechie is a Director of Palton Morgan Holdings. He has wide experience in marketing and strategy - derived from his work as Head of Marketing/Sales at Nestle Nigeria, Xerox, as well as his consulting work with Nigerian firms over the years.</p> <p>Currently the Chairman of Diamond Bank Plc, Chris is also a member of the faculty at the Lagos Business School, where he leads sessions on strategy and corporate governance and where he is also the Head of the Strategy Group. He is also a visiting professor in Strathmore Business School.</p> <p>His current research and consulting interests are in strategic planning and corporate governance. He has several publications in financial services marketing, strategic planning, corporate social responsibility, and corporate governance. He has also presented papers in various international conferences.</p> <p>Some of his most notable publications include: Strategic Marketing of Financial Services - A Nigerian Perspective, and Re-engineering the Nigerian Society through Social Marketing.</p> <p>Chris has been involved with several start-ups, is on the board of several companies and has led several consulting engagements involving Corporate and Business Strategy Development, Customer and Employee Engagement Measurement and Process Development, Marketing Strategy Development and Restructuring for financial institutions all around Africa.</p> <p>Chris Ogbechie has a first class honours degree in Mechanical Engineering from Manchester University, an MBA from Manchester Business School and a PhD in Corporate Governance from Brunel University.</p>
---	--

Delphine Misan-Arenyeka Director	<p>Delphine Misan-Arenyeka was appointed as a Director with Palton Morgan Holdings. Prior to her engagement, she served on the pioneer board of Habitat for Humanity Nigeria for four years, and the Millard Fuller Foundation for over eight years in the capacity as Chairperson Head of Finance and Admin matters board subcommittee.</p> <p>In addition, she has worked with the Centre for Africa (ILCA) now ILRI (International Livestock Research Institute), in Addis Ababa and at the firm Deloitte Haskins and Sells, management consultants - where she single-handedly oversaw the consultancy business of the firm for a two and a half years. Her work with ILCA earned her a Ford Foundation Award to proceed for postgraduate studies in the UK.</p> <p>In 2014, Delphine was appointed as Vice Chairperson of the Local Organising Committee for the International Conference on Disabilities in conjunction with the IASSIDD (International Association for Scientific Studies on Intellectual Disabilities Disorders) Academy. The conference was held from June 22nd to 25th, 2015 – and was the first ever in Africa.</p> <p>Delphine currently sits on the board of the Community Development Foundation, a micro-credit and entrepreneurial capacity development NGO with branches in 23 states of the Federation.</p> <p>She is currently an independent consultant with People Affairs Limited, a Human Resources Consultancy she co–established with her close friend.</p> <p>Delphine Misan-Arenyeka has a first degree in Agricultural Economics from the University of Ibadan, as well as a Masters degree in Business Management and Finance from the University of London (The Imperial College at Wye, Kent).</p>
--	---

Ronke Bammeke Director	<p>Ronke Bammeke sits as a Director in the board of Palton Morgan Holdings with over twenty-seven years of Banking, Information Technology, and Accounting and General Management experience.</p> <p>She was formerly Managing Director of Guaranty Trust Bank UK Ltd where she had overall responsibility for licensing and other establishment aspects of the subsidiary.</p> <p>She was also formerly General Manager Operations in First Bank Nig. Plc where she created an independent operations function that effectively discharged its first level Operational Risk Management role by initiating and implementing a radical structural change that separated branch operations from branch sales and marketing.</p> <p>Ronke holds a First Class degree in Computer Science and Economics from Obafemi Awolowo University Ile-Ife and an MSc. in Management from London Business School.</p>
----------------------------------	--

Man-made
innovation
and *organic*,
natural beauty



Contact Details

11th Floor Churchgate Towers,
PC31Churchgate Street,
Victoria Island ,
Lagos, Nigeria

www.grenadineshomes.com



